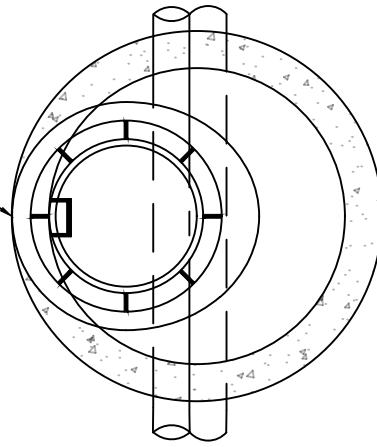


LOCATE FRAME AND COVER OVER LEDGE OF AT LEAST 12" IN WIDTH

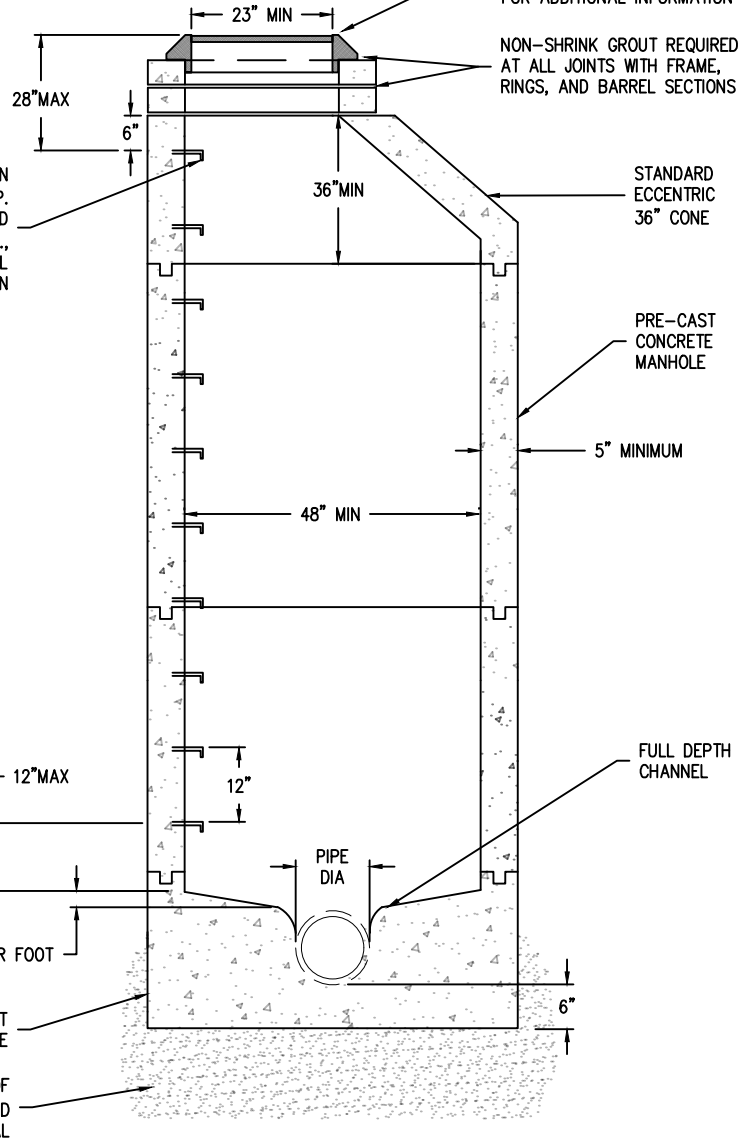


PLAN

MANHOLE FRAME MUST BE FLUSH WITH ROADWAY WITHOUT THE USE OF PAVING RINGS, SEE NOTE 5 FOR ADDITIONAL INFORMATION

NON-SHRINK GROUT REQUIRED AT ALL JOINTS WITH FRAME, RINGS, AND BARREL SECTIONS

POLYETHYLENE STEPS W/ IRON REINFORCEMENT, 8"x12" WIDE, 2" DROP. LOCATE FIRST STEP OVER SHELF AND INSTALL W/ 3" IMBED AT 12" O.C., TYP., U.N.O., SEE NOTE 6 FOR ADDITIONAL INFORMATION



SECTION

NOTES:

1. MANHOLE LID TO BE FLUSH WITH ROADWAY OR 6" ABOVE FINISH GRADE IN EASEMENTS UNLESS OTHERWISE SPECIFIED.
2. SHELF SHALL NOT BE BELOW THE SPRING LINE OF THE PIPE.
3. STRUCTURE OPENINGS TO BE PRE-CAST OR CORE DRILLED ONLY.
4. ALL PRE-CAST MANHOLE SECTIONS SHALL CONFORM TO THE REQUIREMENTS OF ASTM C-478.
5. ALL JOINTS AND RUBBER GASKETS SHALL CONFORM TO THE REQUIREMENTS OF ASTM C-443.
6. STEPS SHALL CONFORM TO THE REQUIREMENTS OF ASTM C-478. MANHOLE STEPS MUST BE TIGHT AND FIRMLY EMBEDDED. ALL STEPS WITHIN A MANHOLE SHALL BE OF THE SAME DESIGN, TYPE, AND (MIXING OF UNMATCHED STEPS IS NOT PERMITTED). MANHOLES UNDER 3' DEEP DO NOT REQUIRE STEPS.
7. ALL PIPE CONNECTIONS TO MANHOLE SHALL BE WATERTIGHT.
8. CHANNEL MUST HAVE A MINIMUM OF 0.2' DROP BETWEEN INLET AND OUTLET.
9. CHANNELS MUST BE ABLE TO PASS A 7"x30" CYLINDER INTO PIPES.

NO.	REVISIONS	DATE	BY
1			
2			
3			
4			