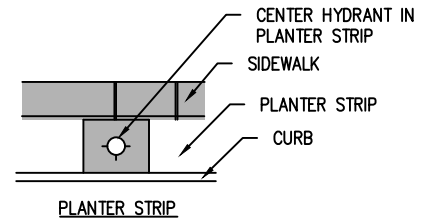
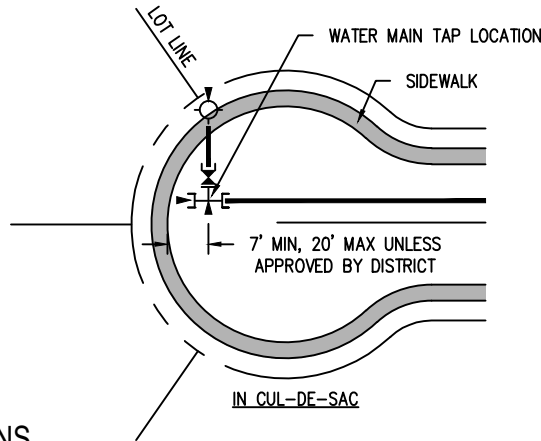
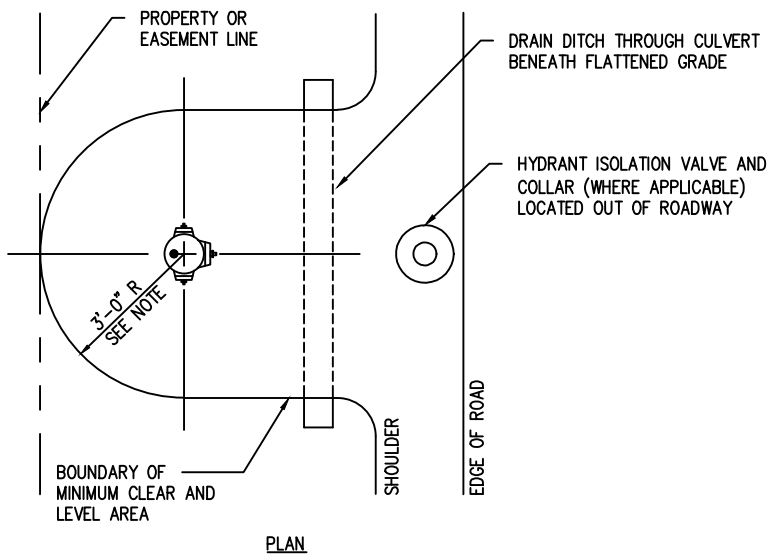


HYDRANT LOCATIONS NOTES:

1. COORDINATE HYDRANT LOCATION WITH DISTRICT.
2. HYDRANTS SHALL BE INSTALLED AT THE END OF ALL 8" DIAMETER AND LARGER DEAD END MAINS.
3. IF HYDRANT CANNOT BE LOCATED WITHIN ROW WITH 3' CLEAR, AN EASEMENT MUST BE PROVIDED.

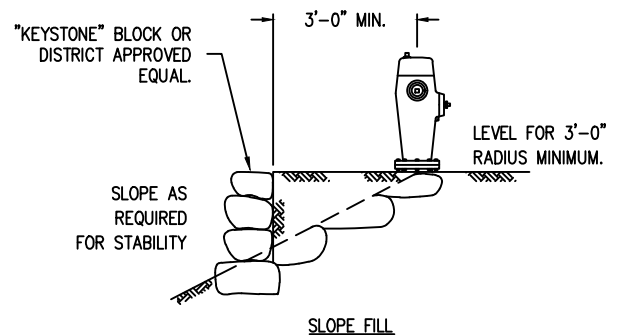
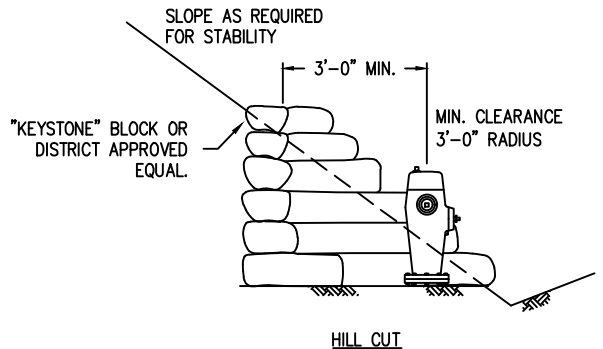


TYPICAL HYDRANT LOCATIONS



NOTES:

1. SURFACE TO 4" THICK CONCRETE PAD, FREE FROM OBSTRUCTIONS, LEVEL, AND UNIFORMLY GRADED AROUND HYDRANT, MIN OF 3 FEET IN ALL DIRECTIONS.
2. ROCKERY OR KEYSTONE TYPE RETAINING WALL TO BE PROVIDED WHERE NECESSARY IN CUT AND FILL AREAS.



CLEARANCE AND GRADING REQUIREMENTS FOR HYDRANTS

<p>OAK LODGE WATER SERVICES</p> <p>WATER SYSTEM STANDARD DRAWING</p>	FIRE HYDRANT LOCATIONS				DRAWING NO. 412
	NO.	REVISIONS	DATE	BY	DATE: 07/07/2017 SCALE: NTS
1	REARRANGED AND ADDED HEADINGS	02/18/2020	HSO		
2					
3					
4					